

## Other Innovations

The school is being built with compressed earth bricks which are stronger than burnt bricks and require no firing, so saving the burning of hundreds of trees. Fruit trees are being planted throughout the compound and fruit vines along the perimeter fence.

Alternative technologies incorporated in the design

- Rain water harvesting
- Re-cycling of grey water for irrigation
- Use of renewable power sources such as bio-gas and solar
- Eco-San composting toilets
- Waste incinerators heating water
- Energy-saving stoves
- Making sanitary pads from papyrus and recycled paper
- Composting all biodegradable waste

Local people and institutions will be shown and encouraged to use these methods. Youth with practical skills such as carpentry, bricklaying, plumbing, electrical installation, tailoring and catering who have benefited from TESS sponsorship will be employed to assist with construction and maintenance.

Shalom International School for Life-Long Learning is a non-denominational Christian institution managed by an independent board. It is supported by local communities in Teso, cultural leaders, government officers and Christians of all denominations.

Whilst children whose families can afford to pay fees will be accepted, priority will be given to the poorest and most deserving children of Teso who will need sponsorship. Staff and students will be selected by the Management Board in consultation with TESS.



View of a typical street in 'Shalom Village'

## Visioning Team

*Rev Jeremiah Acelun* is the Chaplain and Dean of Students at Kumi University and is also the Education Co-ordinator for the Church of Uganda's Kumi Diocese.  
jeremiacelun@yahoo.com  
Tel: +256-772-3306

*Rev Sam Ediau* is a Graduate teacher in History and Divinity who was a Deputy Head Teacher before being ordained in the Church of Uganda. He is currently running TESS in Teso, based in the

Education Offices of the Diocese of Soroti.  
tesocsp@yahoo.com  
Tel: +256-772-884441

*Mrs Margaret Stevens* has been involved in Teso for 20 years. In 2004, at the request of the church leaders of Teso, she set up TESS to support children through postprimary education.  
mstevens@tess.uk.net  
Tel: Uganda: +256-774-493376

# Shalom International School for Life-Long Learning

## Preliminary Urban Design

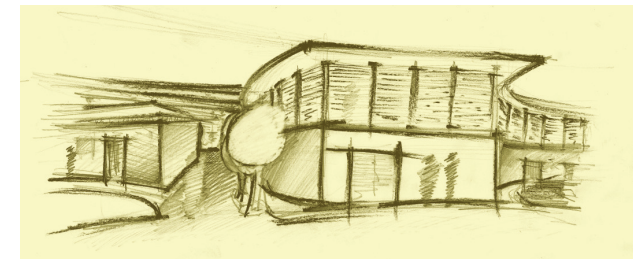
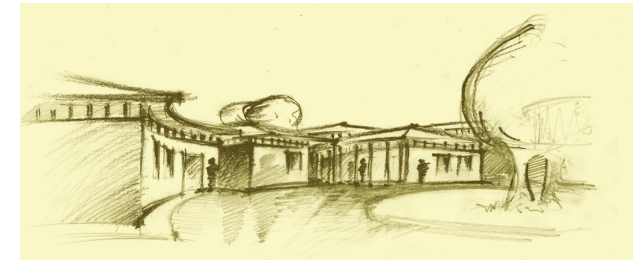
Architectural Services:  
Buildings for Human Development (BHD) and MO Studio

Project prepared for:  
Teso Educational Support Scheme (TESS),  
Rev Jeremiah Acelun, Rev Sam Ediau

Location:  
Kapiri, Kumi, Teso, Uganda.



View to the Chapel and the Village Green



Above: View of buildings surrounding the 'Village Green'  
Below: View of the canteen

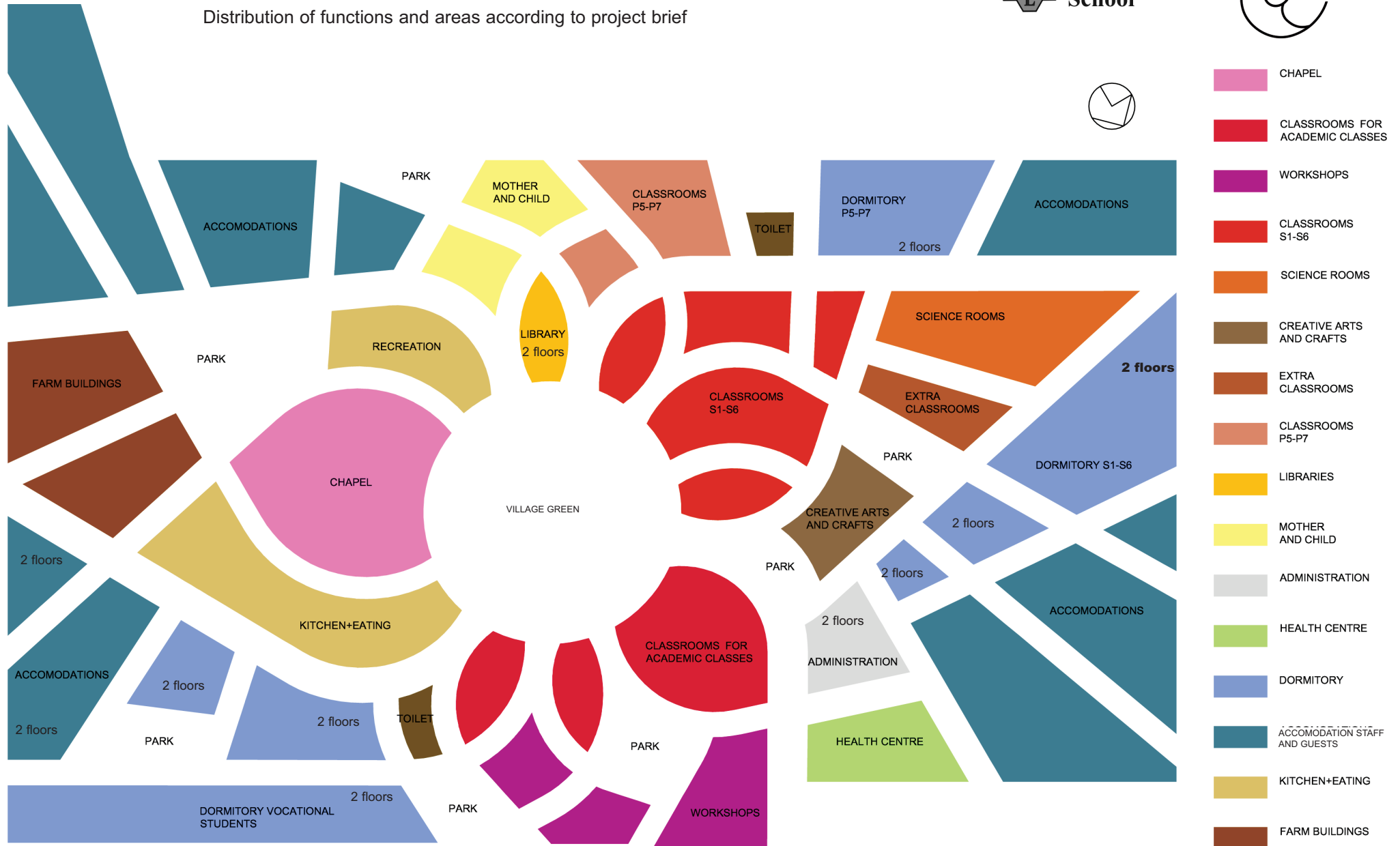




Shalom  
International  
School



Distribution of functions and areas according to project brief



## Sustainability and Community Construction

The new village and its buildings will be based on principles of sustainability. Sustainable architecture fits perfectly the philosophical goals of both the Shalom School and BHD. Also in an area where building materials are hard to come by and mains services are limited a sustainable approach makes good, practical sense.

Building materials, such as compressed earth bricks, will be fabricated on site using local labour. Many of the people that will help construct the school will also go on to enrol as students once it is completed. This will create a unique bond between the school and its students. In this way it is an example of sustainability in the broadest possible meaning.

The design will be based on sustainable technologies wherever possible such as the re-cycling of rain water and grey water, renewable energy sources, incineration of waste to provide hot water and eco friendly sewage treatment.



View of the Health Centre at the entrance of 'Shalom Village'